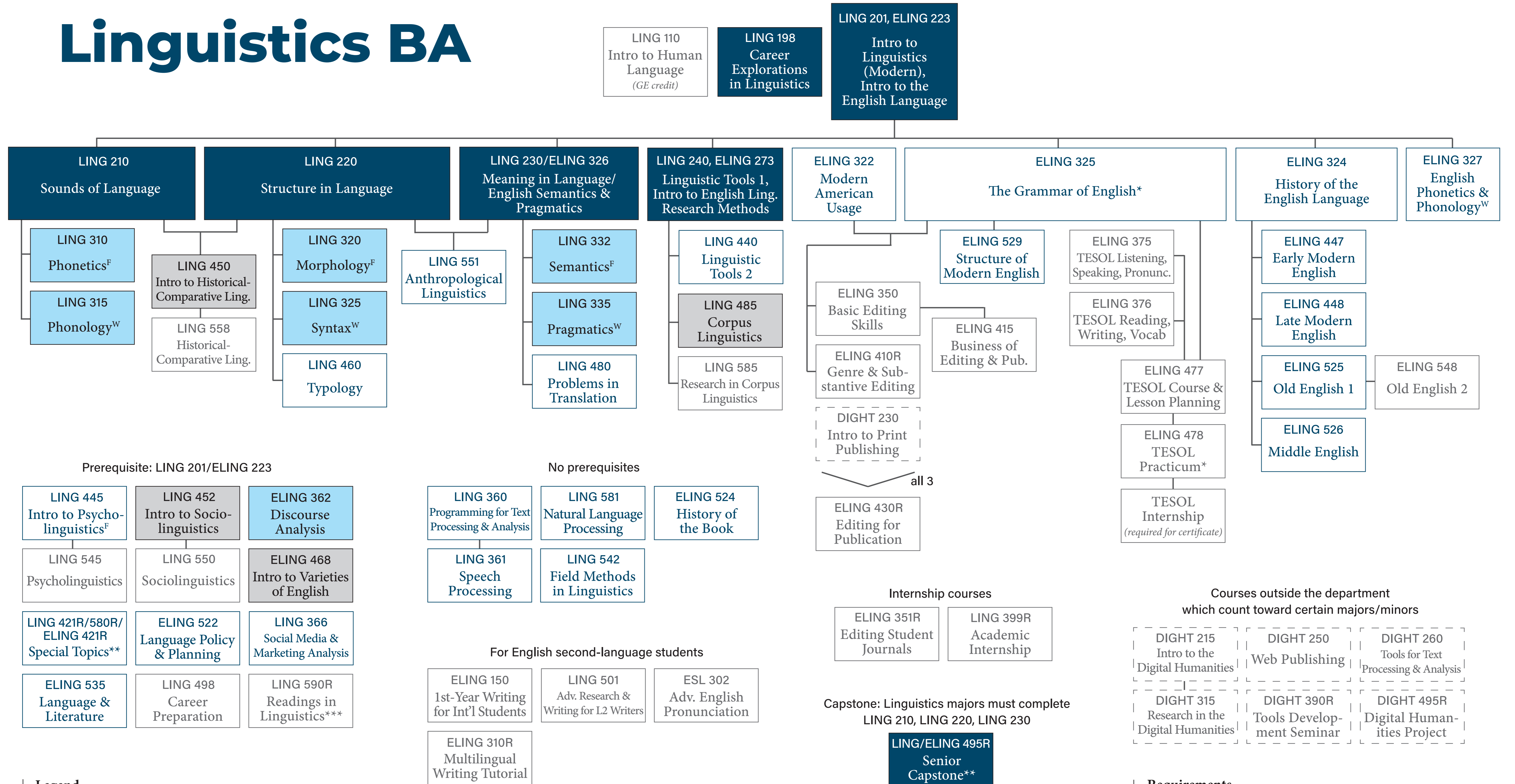


Linguistics BA



Legend

- * May be taken concurrently with its prerequisite.
- ** Topics change each semester. Visit ling.byu.edu/courses to see topics for upcoming semesters.
- *** Independent readings course. Must be arranged individually with a professor.
- ^F Offered only fall semesters.
- ^W Offered only winter semesters.

Availability of courses varies. Foundational courses are generally offered more often.

Requirements

- Complete all **X** courses.
- Complete 2 **Y** courses.
- Complete 1 **Z** course.
- Complete 3 other **X**, **Y**, or **Z** courses.
- Complete a foreign language up to the 200-level (e.g. JAPAN 101, 102, 201).