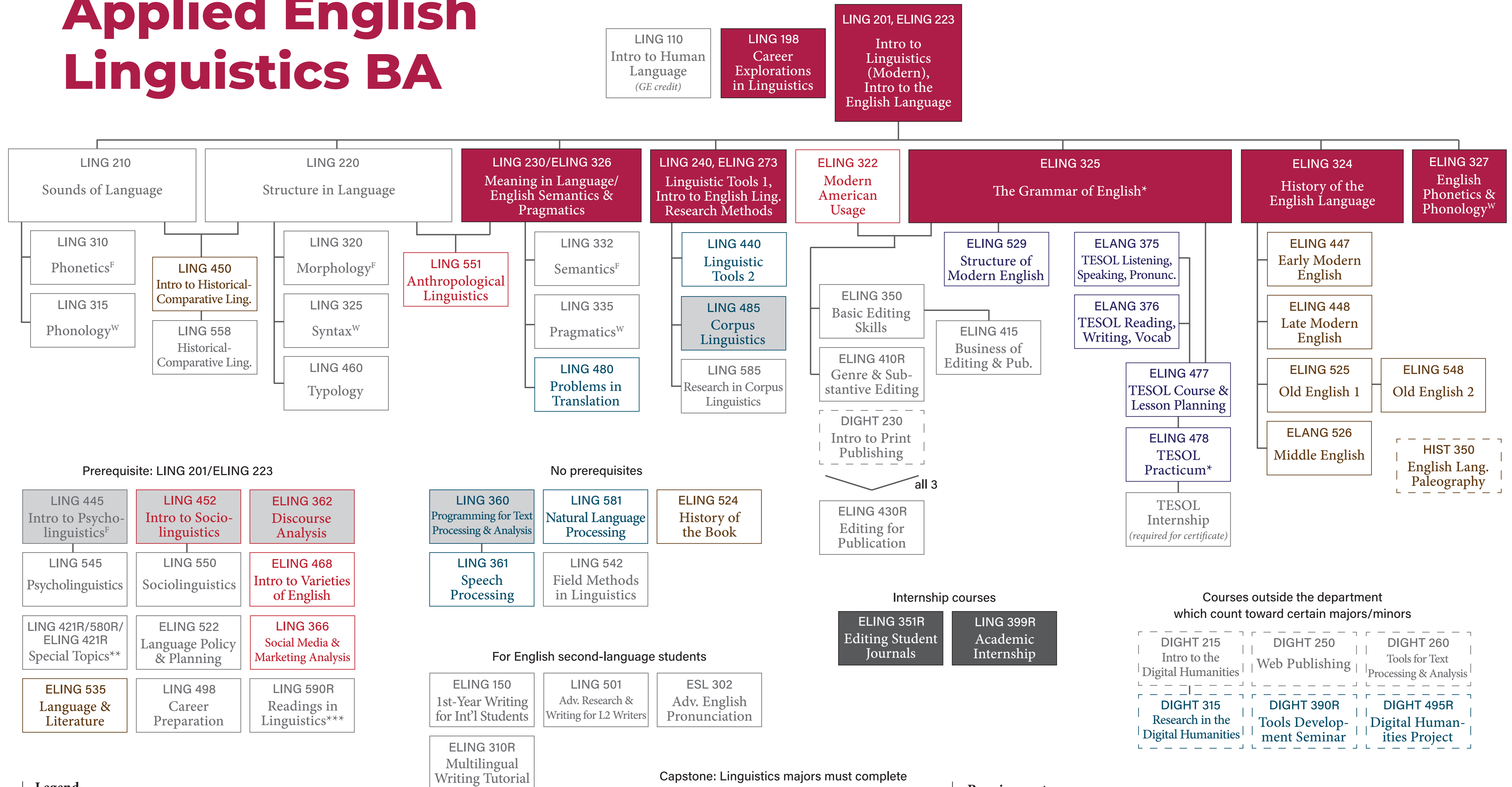


Applied English Linguistics BA



Legend

- * May be taken concurrently with its prerequisite.
 - ** Topics change each semester. Visit ling.byu.edu/courses to see topics for upcoming semesters.
 - *** Independent readings course. Must be arranged individually with a professor.
 - ^F Offered only fall semesters.
 - ^W Offered only winter semesters.
- Availability of courses varies. Foundational courses are generally offered more often.

Requirements

- Complete all **X** courses.
- Complete 2 **X** courses (any color outline, but they may not be double-counted for another requirement).
- Complete 1 hour of a **X** course, 42 hours as a TA/RA, or a study abroad program.
- Complete 4 courses in one of the colored tracks and 2 courses from a different track.
- Complete a foreign language up to the 200-level (e.g. JAPAN 101, 102, 201).